



## UL Recognized CSA Certified

Low profile version of our Signal Sentry series. Available with sleeve or block inductors and optional grounded shielding. Grounded shielding allows connection to grounded cables for additional RFI protection.

## Specifications

### Contacts

Material:	Phosphor bronze
Plating:	50 microinches gold
Barrier underplating:	100 microinches nickel
Resistance:	
Initial:	20 milliohms maximum
After durability testing (500 mating cycles):	30 milliohms maximum

### PCB Terminals

Solderability	60/40
---------------	-------

### Ferrites

Type:	High resistivity, nickel zinc ceramic
Sleeves:	Single-aperture cylinders
Block:	Multi-aperture rectangular prism

### Shield Material

Solder-plated phosphor bronze

### Housing Material

Black glass-filled polyester (Valox 457)

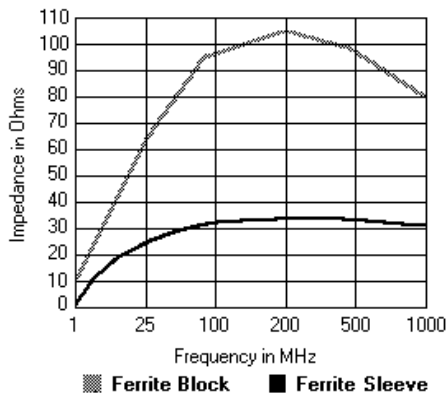
### Dielectric Withstanding Voltage

Line-to-line and line-to-ground 1000VAC for 60 seconds

### Printed Circuit Board Retention

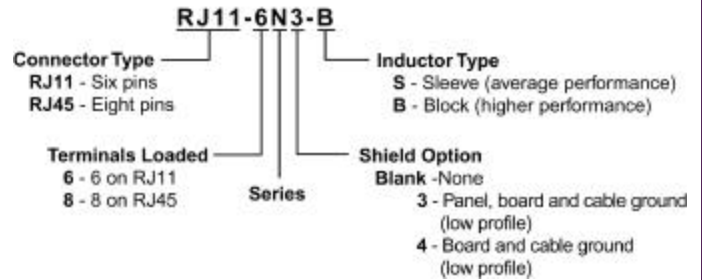
Before soldering:	1 lb. minimum
After soldering:	20 lb. minimum

## Typical Impedance in Ohms



## Ordering Information

Consult your local Corcom sales representative for pricing.

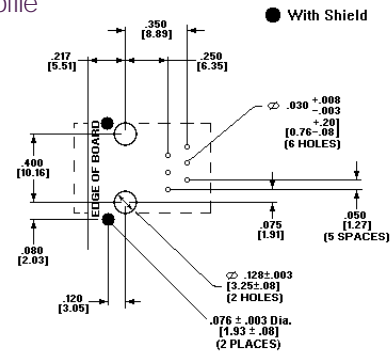


## Available Part Numbers

RJ11-6N-B	RJ45-8N-B
RJ11-6N-S	RJ45-8N-S
RJ11-6N3-B	RJ45-8N3-B
RJ11-6N3-S	RJ45-8N3-S
RJ11-6N4-B	RJ45-8N4-B
RJ11-6N4-S	RJ45-8N4-S

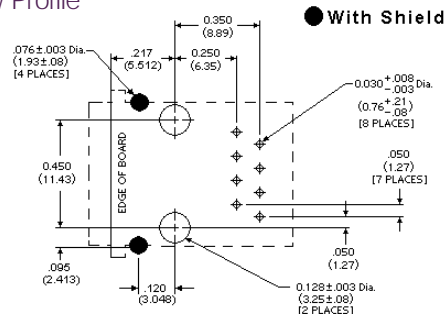
## PC Board Layout

### RJ11 Low Profile



## PC Board Layout

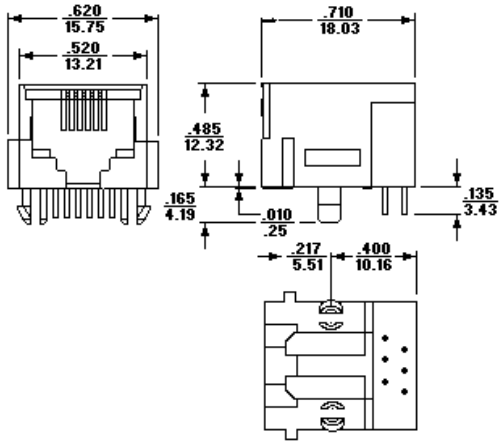
### RJ11 Low Profile



# N Series

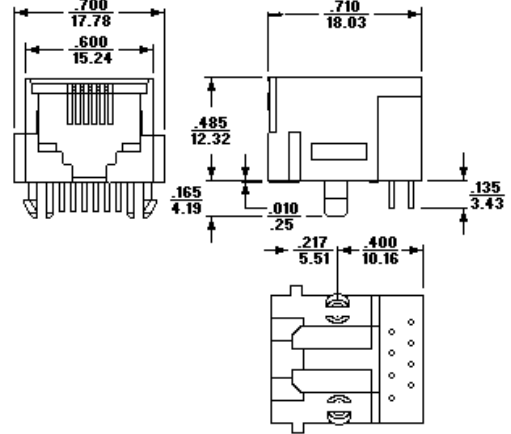
## RJ11 (No Shield)

### Model Dimension



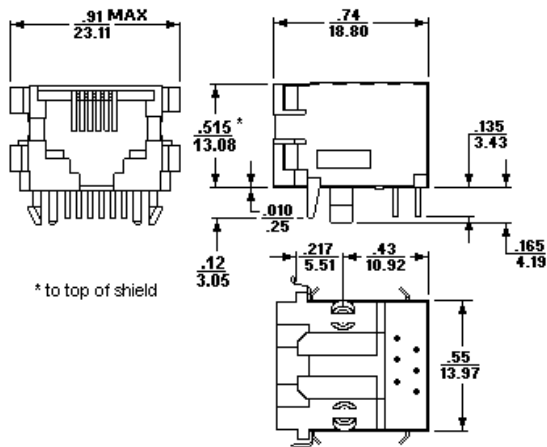
## RJ45 Low Profile (No Shield)

### Model Dimension



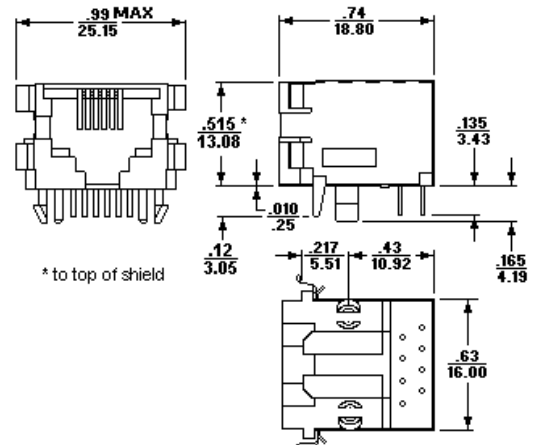
## RJ11 Low Profile (Style 3 Shield)

### Model Dimension



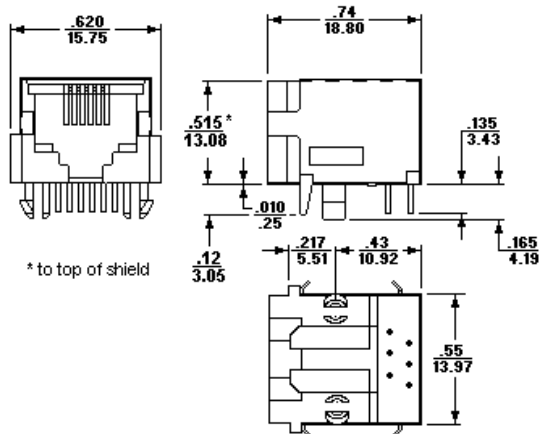
## RJ45 Low Profile (Style 3 Shield)

### Model Dimension



## RJ11 Low Profile (Style 4 Shield)

### Model Dimension



## RJ45 Low Profile (Style 4 Shield)

### Model Dimension

